

ANAPHYLAXIS POLICY



PURPOSE

To explain to Dandenong Valley SDS parents, carers, staff and students the processes and procedures in place to support students diagnosed as being at risk of suffering from anaphylaxis. This policy also ensures that Dandenong Valley SDS is compliant with Ministerial Order 706 and the Department's guidelines for anaphylaxis management.

SCOPE

This policy applies to:

- all staff, including casual relief staff and volunteers
- all students who have been diagnosed with anaphylaxis or who may require emergency treatment for an anaphylactic reaction and their parents and carers.

POLICY

School Statement

Dandenong Valley SDS will fully comply with Ministerial Order 706 and the associated guidelines published by the Department of Education and Training.

Anaphylaxis

Anaphylaxis is a severe allergic reaction that occurs after exposure to an allergen. The most common allergens for school aged children are nuts, eggs, cow's milk, fish, shellfish, wheat, soy, sesame, latex, certain insect stings and medications.

Symptoms

Signs and symptoms of a mild to moderate allergic reactions can include:

- swelling of the lips, face and eyes
- hives or welts
- tingling in the mouth

Signs and symptoms of anaphylaxis, a severe allergic reaction, can include:

- difficult/noisy breathing
- swelling of tongue
- difficulty talking and/or hoarse voice
- wheeze or persistent cough
- persistent dizziness or collapse
- student appears pale or floppy
- abdominal pain and/or vomiting

Symptoms usually develop within ten minutes and up to two hours after exposure to an allergen, but can appear within a few minutes.

Treatment

Adrenaline given as an injection into the muscle of the outer mid-thigh is the first aid treatment for anaphylaxis.

Individuals diagnosed as being at risk of anaphylaxis are prescribed an adrenaline autoinjector for use in an emergency. These adrenaline autoinjectors are designed so that anyone can use them in an emergency.

Individual Anaphylaxis Management Plans

All students at Dandenong Valley SDS who are diagnosed as being at risk of suffering from an anaphylactic reaction by a medical practitioner must have an Individual Anaphylaxis Management Plan. When notified of an anaphylaxis diagnosis, the principal of Dandenong Valley SDS is responsible for developing a plan in consultation with the student's parents/carers.

Where necessary, an Individual Anaphylaxis Management Plan will be in place as soon as practicable after a student enrolls at Dandenong Valley SDS and where possible, before the student's first day.

Parents and carers must:

- obtain an ASCIA Action Plan for Anaphylaxis from the student's medical practitioner and provide a copy to the school as soon as practicable
- immediately inform the school in writing if there is a relevant change in the student's medical condition and obtain an updated ASCIA Action Plan for Anaphylaxis
- provide an up to date photo of the student for the ASCIA Action Plan for Anaphylaxis when that Plan is provided to the school and each time it is reviewed
- provide the school with a current adrenaline autoinjector for the student that is not expired
- participate in annual reviews of the student's Plan.

Each student's Individual Anaphylaxis Management Plan must include:

- information about the student's medical condition that relates to allergy and the potential for anaphylactic reaction, including the type of allergies the student has
- information about the signs or symptoms the student might exhibit in the event of an allergic reaction based on a written diagnosis from a medical practitioner
- strategies to minimise the risk of exposure to known allergens while the student is under the care or supervision of school staff, including in the school yard, at camps and excursions, or at special events conducted, organised or attended by the school
- the name of the person(s) responsible for implementing the risk minimisation strategies which have been identified in the Plan
- information about where the student's medication will be stored
- the student's emergency contact details
- an up-to-date ASCIA Action Plan for Anaphylaxis completed by the student's medical practitioner.

Review and updates to Individual Anaphylaxis Plans

A student's Individual Anaphylaxis Plan will be reviewed and updated on an annual basis in consultation with the student's parents/carers. The plan will also be reviewed and, where necessary, updated in the following circumstances:

- as soon as practicable after the student has an anaphylactic reaction at school
- if the student's medical condition, insofar as it relates to allergy and the potential for anaphylactic reaction, changes
- when the student is participating in an off-site activity, including camps and excursions, or at special events including fetes and concerts.

Our school may also consider updating a student's Individual Anaphylaxis Management Plan if there is an identified and significant increase in the student's potential risk of exposure to allergens at school.

Location of plans and adrenaline autoinjectors

School staff will be provided with a complete and up to date list of students identified as having a medical condition that relates to allergy and the potential for anaphylactic reaction;

Details of Individual Anaphylaxis Management Plans and ASCIA Action Plans will be easily accessible to all staff;

- ASCIA action plans displayed in classrooms and staffroom
- Student Management Plans 'Purple Folders' in each classroom and office with student medical information.
- ASCIA action plans and Adrenaline Autoinjectors taken on all excursions and camps when required.
- Adrenaline Autoinjectors stored and accessible in classroom and school office.
- Adrenaline Autoinjector storage locations clearly labelled.
- in an emergency staff will follow the schools first aid and emergency response procedures

Adrenaline autoinjectors for general use

[Note: for guidance on the appropriate number of general use adrenaline autoinjectors for schools, refer to page 34 of the Department's *Anaphylaxis Guidelines*: <http://www.education.vic.gov.au/school/teachers/health/pages/anaphylaxischl.aspx>.]

Dandenong Valley SDS will maintain a supply of adrenaline autoinjector(s) for general use, as a back-up to those provided by parents and carers for specific students, and also for students who may suffer from a first time reaction at school.

Adrenaline autoinjectors for general use will be stored in the front office and labelled "general use".

The principal is responsible for arranging the purchase of adrenaline auto-injectors for general use, and will consider:

- the number of students enrolled at Dandenong Valley SDS at risk of anaphylaxis
- the accessibility of adrenaline auto-injectors supplied by parents
- the availability of a sufficient supply of auto-adrenaline injectors for general use in different locations at the school, as well as at camps, excursions and events
- the limited life span of adrenaline auto-injectors, and the need for general use adrenaline auto-injectors to be replaced when used or prior to expiry.

Risk Minimisation Strategies

Classrooms	
1.	Keep a copy of the student's Individual Anaphylaxis Management Plan in the classroom. Be sure the ASCIA Action Plan is easily accessible even if the Adrenaline Autoinjector is kept in another location.
2.	Liaise with Parents about food-related activities ahead of time.
3.	Use non-food treats where possible, but if food treats are used in class it is recommended that Parents of students with food allergy provide a treat box with alternative treats. Treat boxes should be clearly labelled and only handled by the student.
4.	Never give food from outside sources to a student who is at risk of anaphylaxis.
5.	Treats for the other students in the class should not contain the substance to which the student is allergic. It is recommended to use non-food treats where possible.
6.	Products labelled 'may contain traces of nuts' should not be served to students allergic to nuts. Products labelled 'may contain milk or egg' should not be served to students with milk or egg allergy and so forth.
7.	Be aware of the possibility of hidden allergens in food and other substances used in cooking, food technology, science and art classes (e.g. egg or milk cartons, empty peanut butter jars).
8.	Ensure all cooking utensils, preparation dishes, plates, and knives and forks etc. are washed and cleaned thoroughly after preparation of food and cooking.
9.	Have regular discussions with students about the importance of washing hands, eating their own food and not sharing food.
10.	A designated staff member should inform casual relief teachers, specialist teachers and volunteers of the names of any students at risk of anaphylaxis, the location of each student's Individual Anaphylaxis Management Plan and Adrenaline Autoinjector, the School's Anaphylaxis Management Policy, and each individual person's responsibility in managing an incident. ie seeking a trained staff member.
Yard	
1.	If a School has a student who is at risk of anaphylaxis, sufficient School Staff on yard duty must be trained in the administration of the Adrenaline Autoinjector (i.e. EpiPen®/ Anapen®) to be able to respond quickly to an anaphylactic reaction if needed.
2.	The Adrenaline Autoinjector and each student's Individual Anaphylaxis Management Plan are easily accessible from the yard, and staff should be aware of their exact location. (Remember that an anaphylactic reaction can occur in as little as a few minutes).
3.	Schools must have a Communication Plan in place so the student's medical information and medication can be retrieved quickly if a reaction occurs in the yard. This may include options of all yard duty staff carrying emergency cards in yard-duty bags, walkie talkies or yard-duty mobile phones. All staff on yard duty must be aware of the School's Emergency Response Procedures and how to notify the general office/first aid team of an anaphylactic reaction in the yard.
4.	Yard duty staff must also be able to identify, by face, those students at risk of anaphylaxis.

5. Students with anaphylactic responses to insects should be encouraged to stay away from water or flowering plants. School Staff should liaise with Parents to encourage students to wear light or dark rather than bright colours, as well as closed shoes and long-sleeved garments when outdoors.

Travel to and from School by bus

1. School Staff should consult with Parents of students at risk of anaphylaxis and the bus service provider to ensure that appropriate risk minimisation and prevention strategies and processes are in place to address an anaphylactic reaction should it occur on the way to and from School on the bus. This includes the availability and administration of an Adrenaline Autoinjector. The Adrenaline Autoinjector and ASCIA Action Plan for Anaphylaxis must be with the student even if this child is deemed too young to carry an Adrenaline Autoinjector on their person at School.

Excursions

1. If a School has a student at risk of anaphylaxis, sufficient School Staff supervising the special event must be trained in the administration of an Adrenaline Autoinjector and be able to respond quickly to an anaphylactic reaction if required.
2. A School Staff member or team of School Staff trained in the recognition of anaphylaxis and the administration of the Adrenaline Autoinjector must accompany any student at risk of anaphylaxis on field trips or excursions.
4. The Adrenaline Autoinjector and a copy of the Individual Anaphylaxis Management Plan for each student at risk of anaphylaxis should be easily accessible and School Staff must be aware of their exact location.
5. For each excursion etc, a risk assessment should be undertaken for each individual student attending who is at risk of anaphylaxis. The risks may vary according to the number of anaphylactic students attending, the nature of the excursion/sporting event, size of venue, distance from medical assistance, the structure of excursion and corresponding staff-student ratio.

All School Staff members present during the excursion need to be aware of the identity of any students attending who are at risk of anaphylaxis and be able to identify them by face.
6. The School should consult Parents of anaphylactic students in advance to discuss issues that may arise; to develop an alternative food menu; or request the Parents provide a meal (if required).

Camps and remote settings

1. Prior to engaging a camp owner/operator's services the School should make enquiries as to whether it can provide food that is safe for anaphylactic students. If a camp owner/operator cannot provide this confirmation to the School, then the School should consider using an alternative service provider.
2. The camp cook should be able to demonstrate satisfactory training in food allergen management and its implications on food-handling practices, including knowledge of the major food allergens triggering anaphylaxis, cross-contamination issues specific to food allergy, label reading, etc.
3. Schools must not sign any written disclaimer or statement from a camp owner/operator that indicates that the owner/operator is unable to provide food which is safe for students at risk of anaphylaxis. Schools have a duty of care to protect students in their care from reasonably foreseeable injury and this duty cannot be delegated to any third party.
4. Schools should conduct a risk assessment and develop a risk management strategy for students at risk of anaphylaxis. This should be developed in consultation with Parents of students at risk of anaphylaxis and camp owners/operators prior to the camp dates.

5.	School Staff should consult with Parents of students at risk of anaphylaxis and the camp owner/operator to ensure that appropriate risk minimisation and prevention strategies and processes are in place to address an anaphylactic reaction should it occur. If these procedures are deemed to be inadequate, further discussions, planning and implementation will need to be undertaken.
6.	If the School has concerns about whether the food provided on a camp will be safe for students at risk of anaphylaxis, it should also consider alternative means for providing food for those students.
7.	Use of substances containing allergens should be avoided where possible.
8.	Camps should avoid stocking peanut or tree nut products, including nut spreads. Products that 'may contain' traces of nuts may be served, but not to students who are known to be allergic to nuts.
9.	The student's Adrenaline Autoinjector, Individual Anaphylaxis Management Plan, including the ASCIA Action Plan for Anaphylaxis and a mobile phone must be taken on camp. If mobile phone access is not available, an alternative method of communication in an emergency must be considered, e.g. a satellite phone.
10.	Prior to the camp taking place School Staff should consult with the student's Parents to review the students Individual Anaphylaxis Management Plan to ensure that it is up to date and relevant to the circumstances of the particular camp.
11.	School Staff participating in the camp should be clear about their roles and responsibilities in the event of an anaphylactic reaction. Check the emergency response procedures that the camp provider has in place. Ensure that these are sufficient in the event of an anaphylactic reaction and ensure all School Staff participating in the camp are clear about their roles and responsibilities.
12.	Contact local emergency services and hospitals well prior to the camp. Advise full medical conditions of students at risk, location of camp and location of any off camp activities. Ensure contact details of emergency services are distributed to all School Staff as part of the emergency response procedures developed for the camp.
13.	Schools should consider taking an Adrenaline Autoinjector for General Use on a school camp, even if there is no student at risk of anaphylaxis, as a back-up device in the event of an emergency.
14.	Schools should consider purchasing an Adrenaline Autoinjector for General Use to be kept in the first aid kit and including this as part of the Emergency Response Procedures.
15.	The Adrenaline Autoinjector should remain close to the student and School Staff must be aware of its location at all times.
16.	The Adrenaline Autoinjector should be carried in the school first aid kit.
17.	Students with anaphylactic responses to insects should always wear closed shoes and long-sleeved garments when outdoors and should be encouraged to stay away from water or flowering plants.
18.	Cooking and art and craft games should not involve the use of known allergens.
19.	Consider the potential exposure to allergens when consuming food on buses and in cabins.

Emergency Response

In the event of an anaphylactic reaction, the emergency response procedures in this policy must be followed, together with the school's general first aid procedures, emergency response procedures and the student's Individual Anaphylaxis Management Plan.

A complete and up to date list of students identified as being at risk of anaphylaxis is maintained by the anaphylaxis officer and stored in the classroom purple folders and in the front office. For camps, excursions and special events, a designated staff member will be responsible for maintaining a list of students at risk of anaphylaxis attending the special event, together with their Individual Anaphylaxis Management Plans and adrenaline autoinjectors, where appropriate.

If a student experiences an anaphylactic reaction at school or during a school activity, school staff must:

Step	Action
1.	<ul style="list-style-type: none">• Lay the person flat• Do not allow them to stand or walk• If breathing is difficult, allow them to sit• Be calm and reassuring• Do not leave them alone• Seek assistance from another staff member or reliable student to locate the student's adrenaline autoinjector or the school's general use autoinjector, and the student's Individual Anaphylaxis Management Plan, stored in classroom purple folders.• If the student's plan is not immediately available, or they appear to be experiencing a first time reaction, follow steps 2 to 5
2.	Administer an EpiPen or EpiPen Jr (if the student is under 20kg) <ul style="list-style-type: none">• Remove from plastic container• Form a fist around the EpiPen and pull off the blue safety release (cap)• Place orange end against the student's outer mid-thigh (with or without clothing)• Push down hard until a click is heard or felt and hold in place for 3 seconds• Remove EpiPen• Note the time the EpiPen is administered• Retain the used EpiPen to be handed to ambulance paramedics along with the time of administration
3.	Call an ambulance (000)
4.	If there is no improvement or severe symptoms progress (as described in the ASCIA Action Plan for Anaphylaxis), further adrenaline doses may be administered every five minutes, if other adrenaline autoinjectors are available.
5.	Contact the student's emergency contacts.

If a student appears to be having a severe allergic reaction, but has not been previously diagnosed with an allergy or being at risk of anaphylaxis, school staff should follow steps 2 – 5 as above.

[Note: If in doubt, it is better to use an adrenaline autoinjector than not use it, even if in hindsight the reaction is not anaphylaxis. Under-treatment of anaphylaxis is more harmful and potentially life threatening than over treatment of a mild to moderate allergic reaction. Refer to page 41 of the [Anaphylaxis Guidelines](#)].

Communication Plan

This policy will be available on Dandenong Valley SDS's website so that parents and other members of the school community can easily access information about Dandenong Valley SDS's anaphylaxis

management procedures. The parents and carers of students who are enrolled at Dandenong Valley SDS and are identified as being at risk of anaphylaxis will also be provided with a copy of this policy.

The Principal is responsible for ensuring that all relevant staff, including casual relief staff and volunteers are aware of this policy and Dandenong Valley SDS's procedures for anaphylaxis management. This policy will be included in volunteer/CRT induction packs.

Casual relief staff and volunteers who are responsible for the care and/or supervision of students who are identified as being at risk of anaphylaxis will also receive a verbal briefing on this policy.

Staff training

Staff at Dandenong Valley SDS will receive appropriate training in anaphylaxis management, consistent with the Department's *Anaphylaxis Guidelines*.

Staff who are responsible for conducting classes that students who are at risk of anaphylaxis attend, and any further staff that the principal identifies, must have completed:

- an approved face-to-face anaphylaxis management training course in the last three years, or
- an approved online anaphylaxis management training course in the last two years.

Staff are also required to attend a briefing on anaphylaxis management and this policy at least twice per year, facilitated by a staff member who has successfully completed an anaphylaxis management course within the last 2 years. Each briefing will address:

- this policy
- the causes, symptoms and treatment of anaphylaxis
- the identities of students with a medical condition that relates to allergy and the potential for anaphylactic reaction, and where their medication is located
- how to use an adrenaline autoinjector, including hands on practice with a trainer adrenaline autoinjector
- the school's general first aid and emergency response procedures
- the location of, and access to, adrenaline autoinjectors that have been provided by parents or purchased by the school for general use.

When a new student enrolls at Dandenong Valley SDS who is at risk of anaphylaxis, the principal will develop an interim plan in consultation with the student's parents and ensure that appropriate staff are trained and briefed as soon as possible.

FURTHER INFORMATION AND RESOURCES

- School Policy and Advisory Guide:
 - [Anaphylaxis](#)
 - [Anaphylaxis management in schools](#)
- Allergy & Anaphylaxis Australia: [Risk minimisation strategies](#)
- ASCIA Guidelines: [Schooling and childcare](#)
- Royal Children's Hospital: [Allergy and immunology](#)

REVIEW CYCLE AND EVALUATION This policy was last updated on 12/08/2020 and is scheduled for review in 2021.

The principal will complete the Department's Annual Risk Management Checklist for anaphylaxis management to assist with the evaluation and review of this policy and the support provided to students at risk of anaphylaxis.

Individual Anaphylaxis Management Plan

This plan is to be completed by the principal or nominee on the basis of information from the student's medical practitioner (**ASCIA Action Plan for Anaphylaxis**) provided by the parent.

It is the parent's responsibility to provide the school with a copy of the student's ASCIA Action Plan for Anaphylaxis containing the emergency procedures plan (signed by the student's medical practitioner) and an up-to-date photo of the student - to be appended to this plan; and to inform the school if their child's medical condition changes.

School		Phone	
Student			
DOB		Year level	
Severely allergic to:			
Other health conditions			
Medication at school			
EMERGENCY CONTACT DETAILS (PARENT)			
Name		Name	
Relationship		Relationship	
Home phone		Home phone	
Work phone		Work phone	
Mobile		Mobile	
Address		Address	
EMERGENCY CONTACT DETAILS (ALTERNATE)			
Name		Name	
Relationship		Relationship	
Home phone		Home phone	
Work phone		Work phone	
Mobile		Mobile	
Address		Address	
Medical practitioner contact	Name		
	Phone		
Emergency care to be provided at school			

Storage location for adrenaline autoinjector (device specific) (EpiPen®)	

ENVIRONMENT

To be completed by principal or nominee. Please consider each environment/area (on and off school site) the student will be in for the year, e.g. classroom, canteen, food tech room, sports oval, excursions and camps etc.

Name of environment/area:

Risk identified	Actions required to minimise the risk	Who is responsible?	Completion date?

Name of environment/area:

Risk identified	Actions required to minimise the risk	Who is responsible?	Completion date?

Name of environment/area:

Risk identified	Actions required to minimise the risk	Who is responsible?	Completion date?

Name of environment/area:

Risk identified	Actions required to minimise the risk	Who is responsible?	Completion date?

This Individual Anaphylaxis Management Plan will be reviewed on any of the following occurrences (whichever happen earlier):

- annually
- if the student's medical condition, insofar as it relates to allergy and the potential for anaphylactic reaction, changes
- as soon as practicable after the student has an anaphylactic reaction at school
- when the student is to participate in an off-site activity, such as camps and excursions, or at special events conducted, organised or attended by the school (eg. class parties, elective subjects, cultural days, fetes, incursions).

I have been consulted in the development of this Individual Anaphylaxis Management Plan.

I consent to the risk minimisation strategies proposed.

Risk minimisation strategies are available at Chapter 8 – Risk Minimisation Strategies of the Anaphylaxis Guidelines

Signature of parent:	
Date:	
I have consulted the parents of the students and the relevant school staff who will be involved in the implementation of this Individual Anaphylaxis Management Plan.	
Signature of principal (or nominee):	
Date:	

Parents and guardians (via their medical practitioner) can access the ASCIA Action Plan from:

<http://www.allergy.org.au/health-professionals/anaphylaxis-resources/ascia-action-plan-for-anaphylaxis>

ACTION PLAN FOR Anaphylaxis

For EpiPen® adrenaline (epinephrine) autoinjectors

Name: _____

Date of birth: _____



Confirmed allergens:

Family/emergency contact name(s):

Work Ph: _____

Home Ph: _____

Mobile Ph: _____

Plan prepared by medical or nurse practitioner:

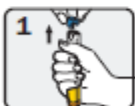
I hereby authorise medications specified on this plan to be administered according to the plan

Signed: _____

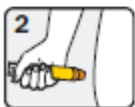
Date: _____

Action Plan due for review: _____

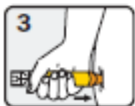
How to give EpiPen®



1 Form fist around EpiPen® and PULL OFF BLUE SAFETY RELEASE



2 Hold leg still and PLACE ORANGE END against outer mid-thigh (with or without clothing)



3 PUSH DOWN HARD until a click is heard or felt and hold in place for 3 seconds REMOVE EpiPen®

All EpiPen® should be held in place for 3 seconds regardless of instructions on device label

SIGNS OF MILD TO MODERATE ALLERGIC REACTION

- Swelling of lips, face, eyes
- Hives or welts
- Tingling mouth
- Abdominal pain, vomiting (these are signs of anaphylaxis for insect allergy)

ACTION FOR MILD TO MODERATE ALLERGIC REACTION

- For insect allergy - flick out sting if visible
- For tick allergy - freeze dry tick and allow to drop off
- Stay with person and call for help
- Locate EpiPen® or EpiPen® Jr adrenaline autoinjector
- Give other medications (if prescribed).....
- Phone family/emergency contact

Mild to moderate allergic reactions (such as hives or swelling) may not always occur before anaphylaxis

WATCH FOR ANY ONE OF THE FOLLOWING SIGNS OF ANAPHYLAXIS (SEVERE ALLERGIC REACTION)

- Difficult/noisy breathing
- Swelling of tongue
- Swelling/tightness in throat
- Wheeze or persistent cough
- Difficulty talking and/or hoarse voice
- Persistent dizziness or collapse
- Pale and floppy (young children)

ACTION FOR ANAPHYLAXIS

1 Lay person flat - do NOT allow them to stand or walk

- If unconscious, place in recovery position
- If breathing is difficult allow them to sit



2 Give EpiPen® or EpiPen® Jr adrenaline autoinjector

3 Phone ambulance - 000 (AU) or 111 (NZ)

4 Phone family/emergency contact

5 Further adrenaline doses may be given if no response after 5 minutes

6 Transfer person to hospital for at least 4 hours of observation

If in doubt give adrenaline autoinjector

Commence CPR at any time if person is unresponsive and not breathing normally

ALWAYS give adrenaline autoinjector FIRST, and then asthma reliever puffer if someone with known asthma and allergy to food, insects or medication has SUDDEN BREATHING DIFFICULTY (including wheeze, persistent cough or hoarse voice) even if there are no skin symptoms

Asthma reliever medication prescribed: Y N